

VIJAYANTA

VIJAI ELECTRONICS
28/147, CIVIL LINES
ROORKEE - 247667

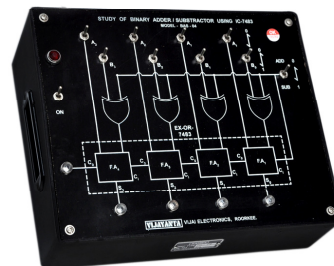


STUDY OF BINARY ADDER / SUBTRACTOR USING

I.C. - 7483 (4-BIT), MODEL - BAS - 04.

FEATURES :

- ** The experimental board BAS - 04 is designed to study binary addition and SUBTRACTION of 4 - bits. The basic circuit has 4 cascaded full adder circuits with one Ex - OR gates as controlled inverter.
- ** The complete Circuit is PRINTED with control switches (as inputs) on the panel of the experimental board.
- ** The Four outputs and one carry (Cyn) are indicated by LED's.
- ** An a another switch is provide for ADD or SUB mode.
- ** A complete working manual giving theory, circuit details and operating instruction supplied with the experimental board.
- ** Builtin I.C. Regulated and short circuit proof ± 5 Volts d.c. Power Supply suitable to the experimental board.
- ** Stackable type connecting leads suitable to the terminals are supplied with the board for easy inter - connections and longer life of the terminals.



EXPERIMENTS:

1. To study operation of Binary Adder / Subtractor.

OTHER APPARATUS REQUIRED :

1. Board is self sufficient.